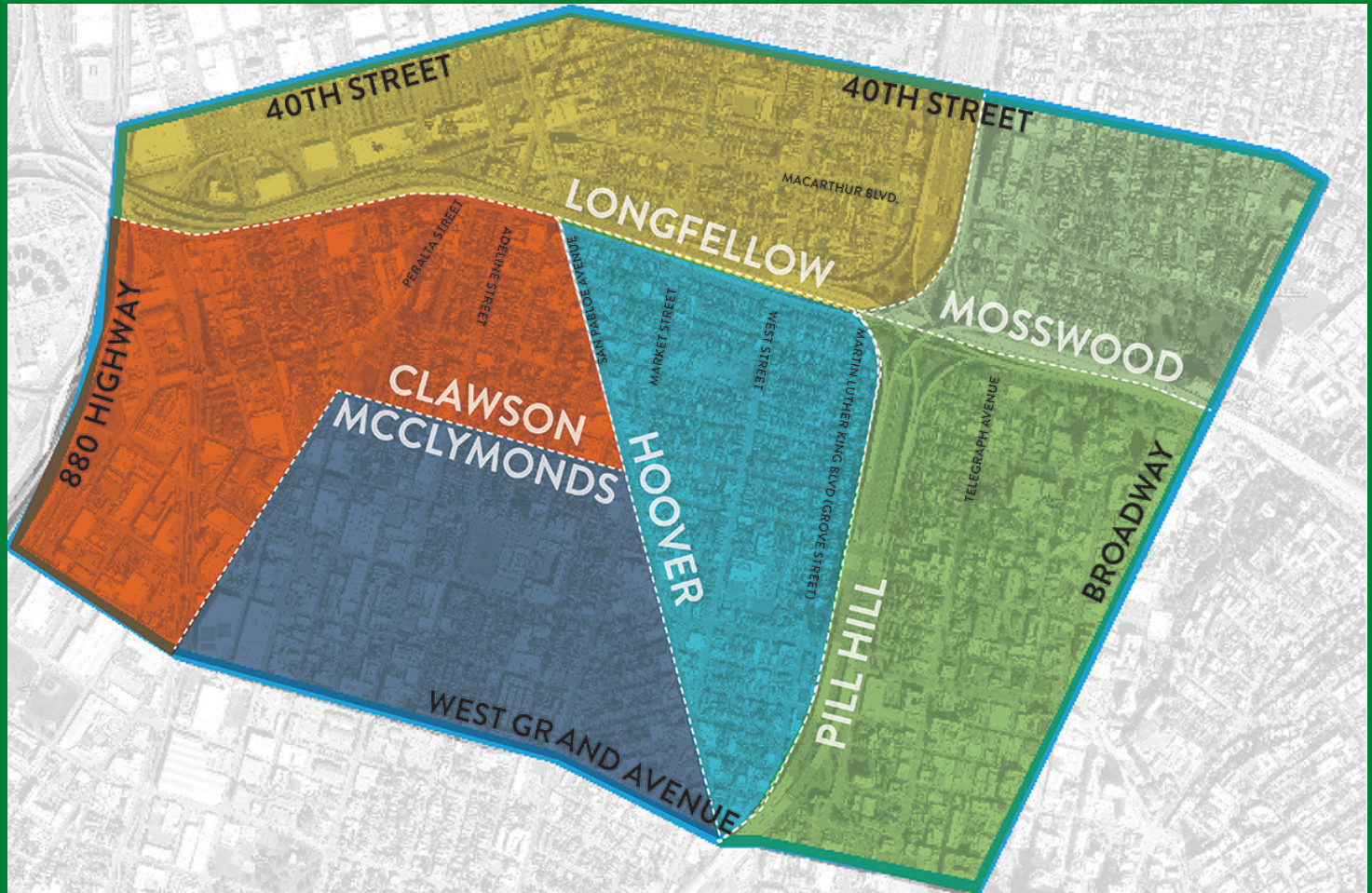


HOOVER BRANCH LIBRARY FEASIBILITY STUDY

TASK 2: RESEARCH + IMMERSION SUMMARY

Issued: November 7, 2023



BRING BACK OUR LIBRARY!

INTRO

THE CHALLENGE

North Oakland Branch Library opened in 1888 and closed in 1981. After almost 100 years of service - without it, we have experienced

- Travel distances of greater than one mile to the closest branch library
- Reduced availability of social service resources and access to knowledge centers
- Elimination of children and elder development spaces
- Lack of safe spaces for residents

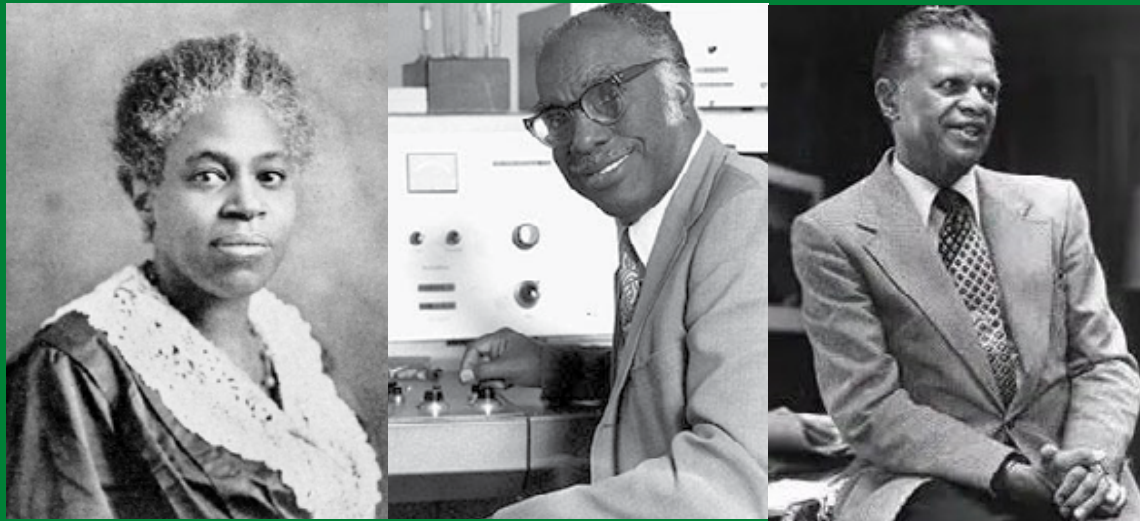
The challenge of the Feasibility Study is to align the opinions, definitions, and actions which will support the building of a new branch library based on community input.

PEOPLE

1925. Delilah Beasley

1943. Dr. Lloyd Ferguson

1977. Lionel Wilson



PLACES

1970. The East Bay Negro Historical

1978. Hoover Foster Middle School



ART + CULTURE

Oakland Superheroes Mural



MAIN STREETS

San Pablo Avenue



BRING BACK OUR LIBRARY!

03



Task 2: Research + Immersion Summary

November 7, 2023

EXISTING ZONING HISTORY

1900's

At this time, residential districts were zoned “A-One-Family District”. West/ Northwest Oakland had three containment zones where African American residents were relegated. None were assigned the protective zoning description “A – One – Family District”.

All three containment zones permitted industrial uses surrounding and dispersed among residences.

1950's

‘Urban Renewal’ eroded the protective social adhesion provided by single-family home ownership with a preference for multi-unit leased housing.

Urban Renewal and Federal Highway construction effectively removed the foundation required to maintain existing small businesses which supported the community.

1970's

Zoning ordinances and other urban planning tools allowed the construction of 3 major highways decisively separating Hoover from Longfellow.

When the highway was constructed, two community libraries were removed.

EXISTING

AMENITIES + BUILT ENVIRONMENT

Existing

As of 2023, within the service area there are:

- (4) Recreation centers
- (1) Senior center
- (5) Schools
- (0) Middle schools

Near

The closest public middle school lies outside the service area and is approximately a 26-minute walk, or a 22-minute bus ride.

- Westlake Middle School

Gone

Two types of publicly-owned amenities no longer exist in the central Hoover Branch catchment area.

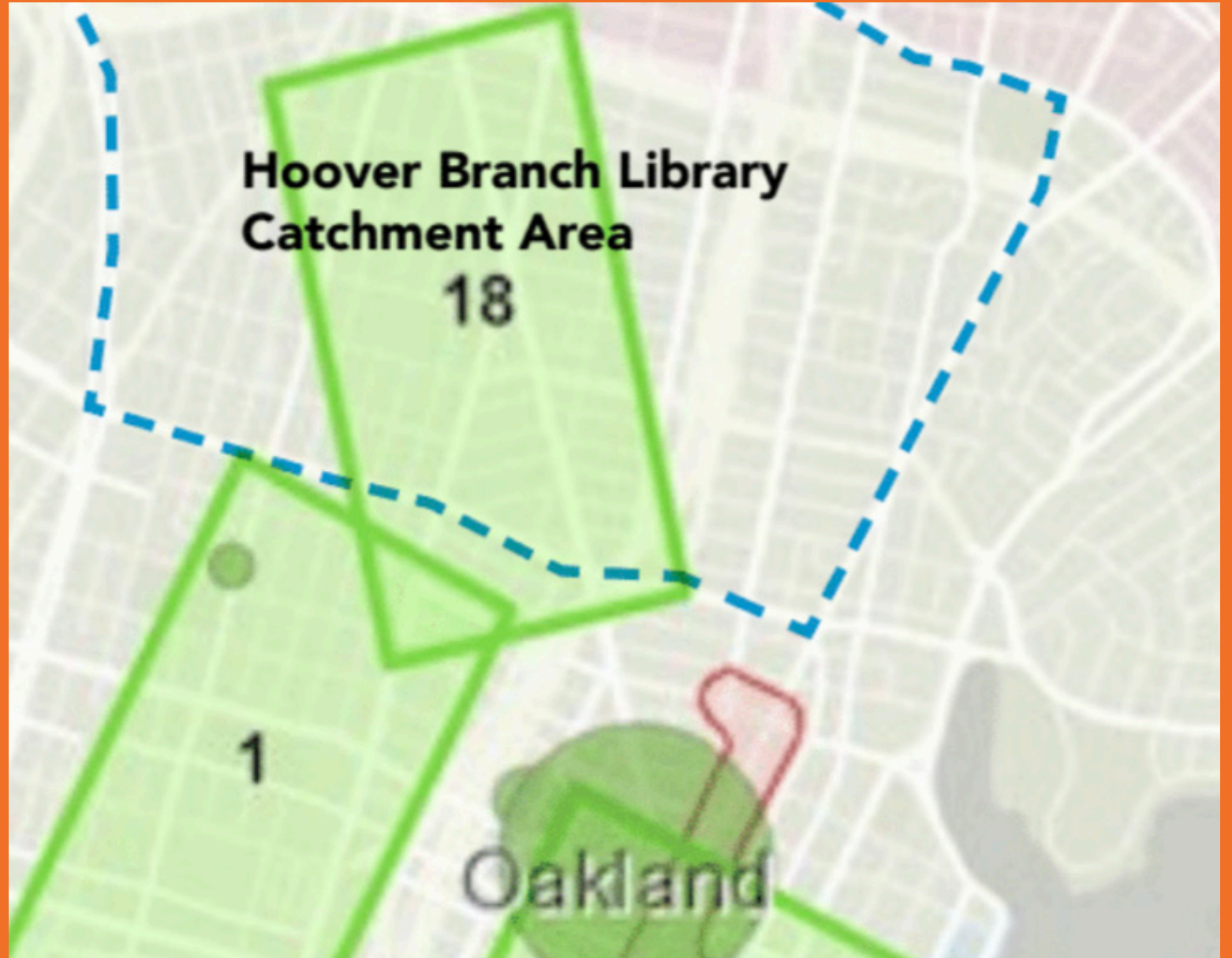
- Senior Centers*
- Libraries

*St. Mary's Center is a 510(c)3 public charity.

EXISTING DIGITAL DIVIDE

The OakWifi Initiative allows students, seniors, job seekers, small businesses, the underserved, and the unconnected around San Pablo Ave to receive free Internet access.

Today, OakWiki does not reach all corners of the project's service area.

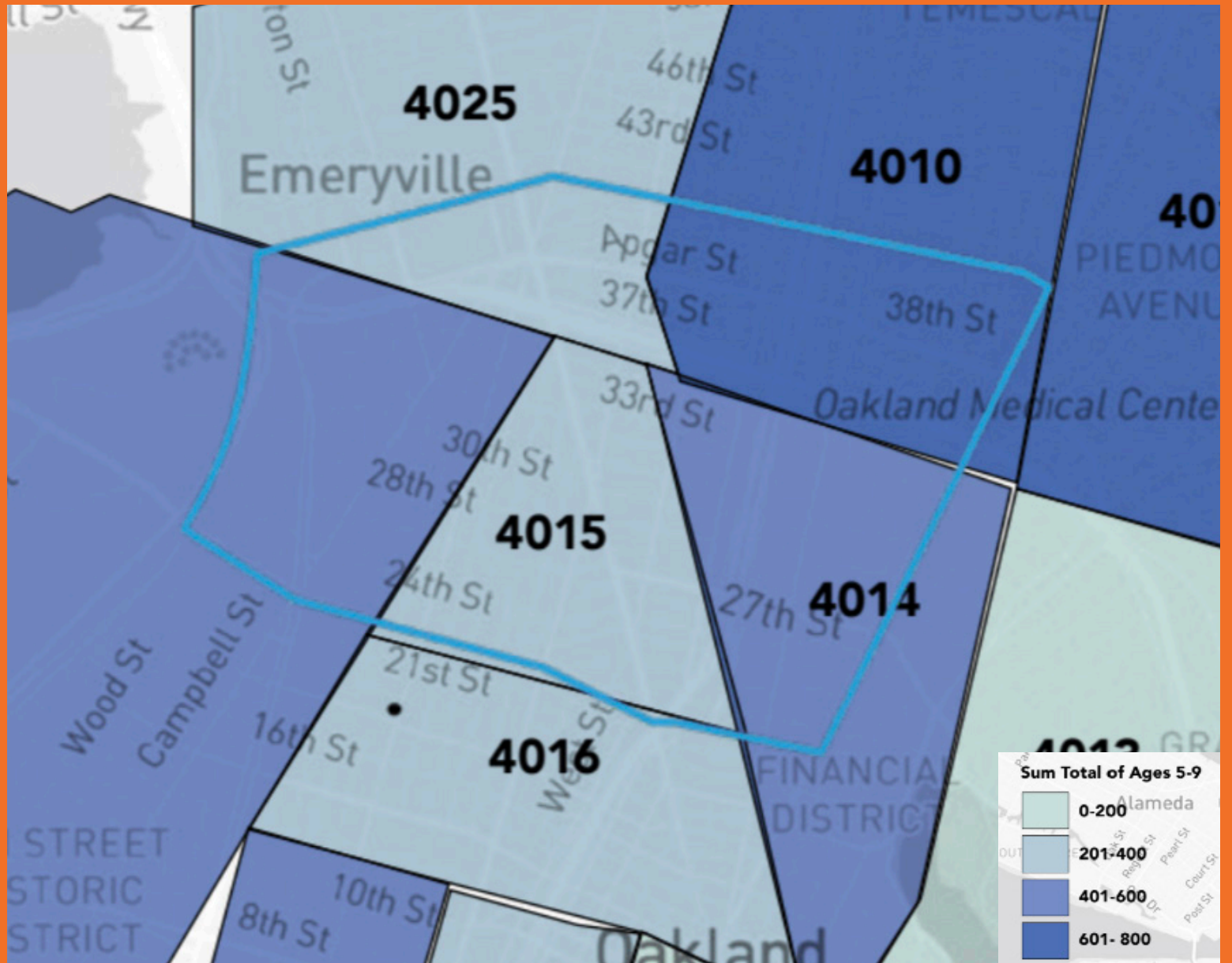


OakWIFI Zones in Project Service Area

EXISTING YOUTH

2,728

Resident youth 18 and under live within the service area. A majority of the age groups do not overlap geographically and rely on youth centers and schools within the outer edges of service area to gather.



American Community Survey - 2021

EXISTING ELDERS

8%

Of the population are elders attributed to a lack of transit access, social isolation, older adult isolation, and linguistic isolation which are indicators of social isolation.

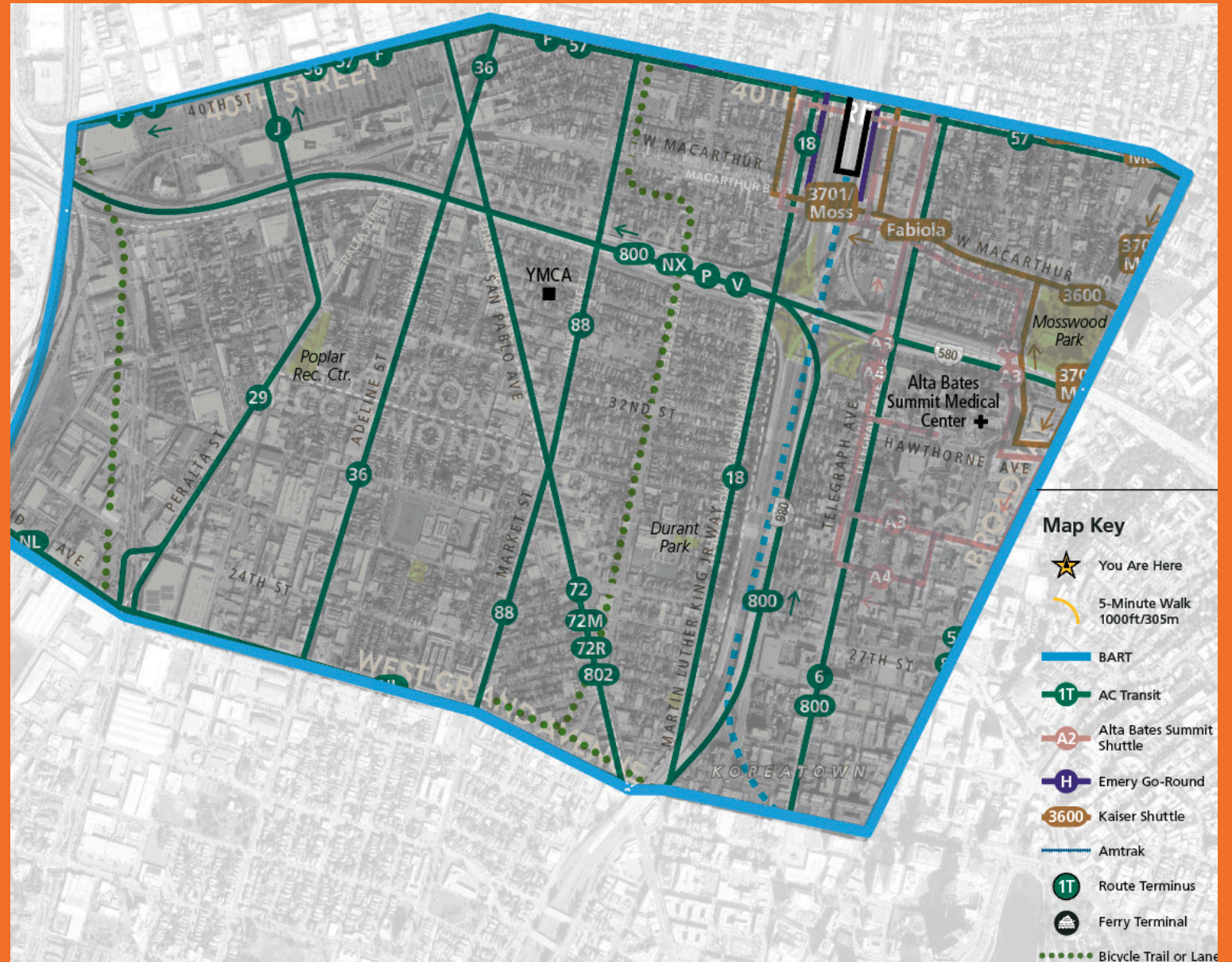


Madeline Wells - Friends of Hoover Durant Public Library

EXISTING TRANSPORTATION

Along the San Pablo corridor, 72, 72M, 72R, 802 & 88 are the most critical bus lines servicing schools, recreation and senior centers along these North-South bus routes.

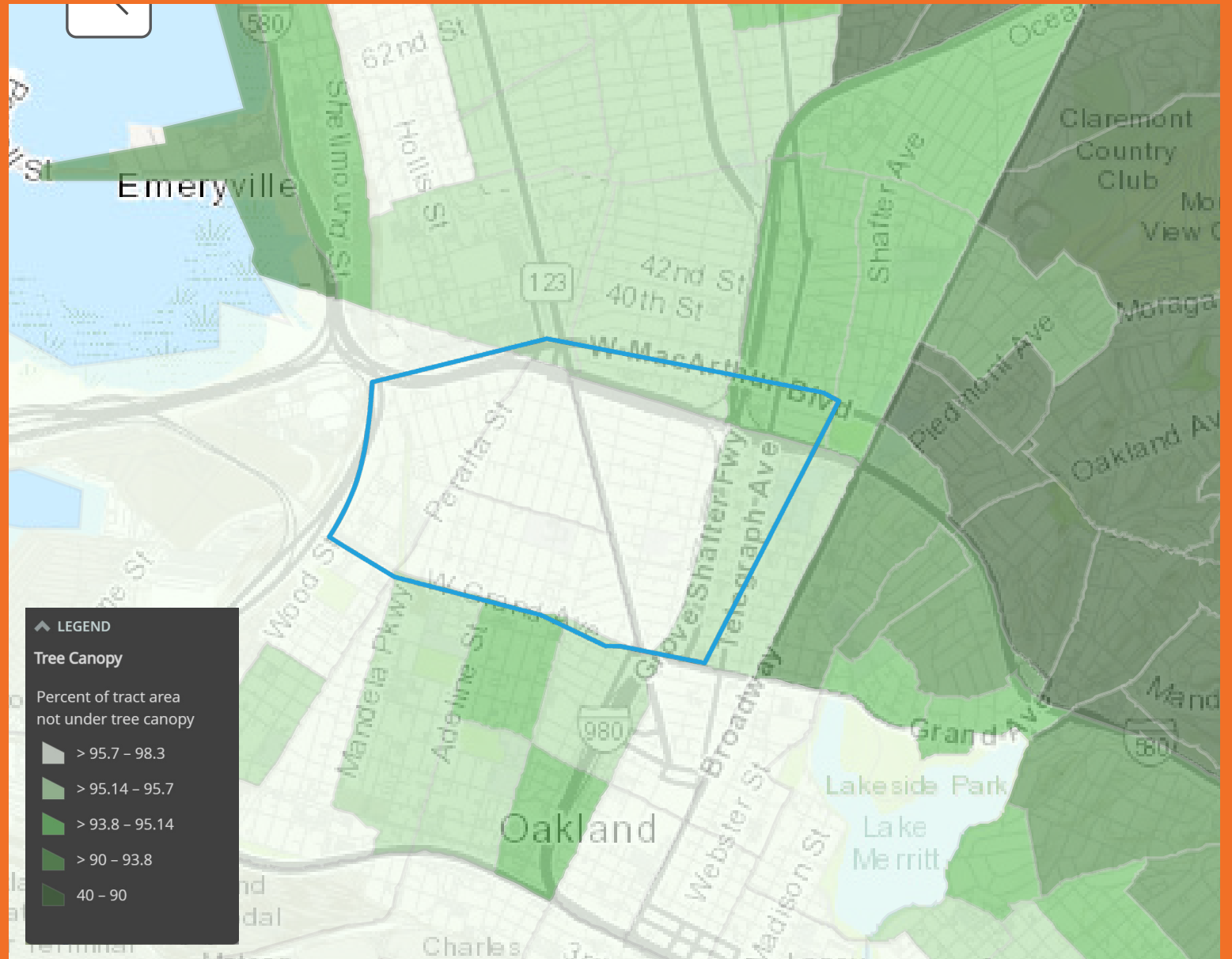
Bus lines 88 & 36 serve McClymonds High School and Hoover Elementary School, respectively.



Transit Services In Project Service Area

EXISTING GREENSPACES

A majority of the project's service area is within the highest percent of tract area that does not lie under a tree canopy.



Alameda County Heat Vulnerability Storymap - 2019

EXISTING CULTURE



Oakland Public Conservatory of Music



California Hotel



Marcus Bookstore

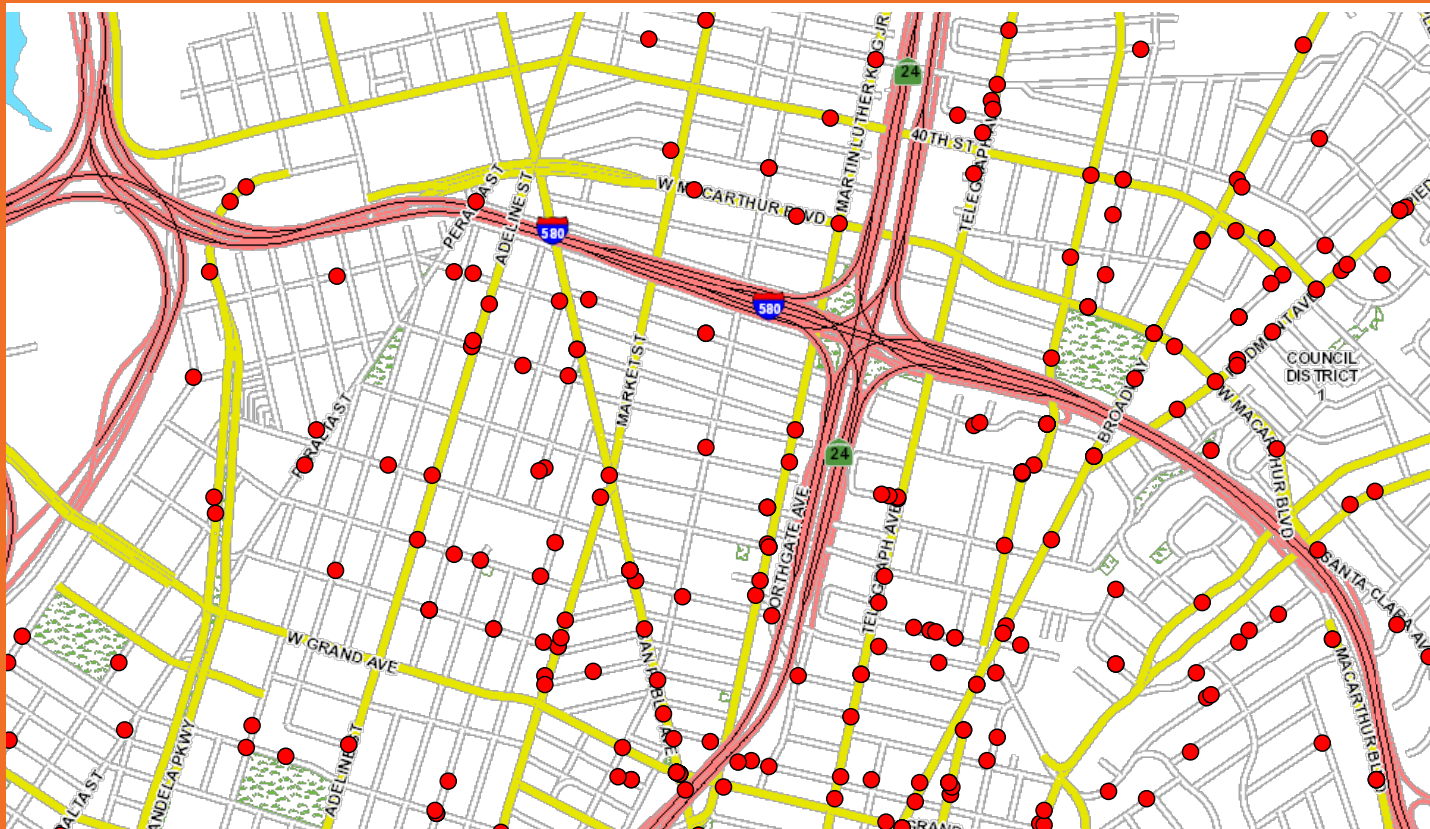
BRING BACK OUR LIBRARY!



Fantastic Negrito

EXISTING CRIME

Is there a role to be played by libraries in reducing crime?



Crime Reporting In Project Service Area 2023

BRING BACK OUR LIBRARY!

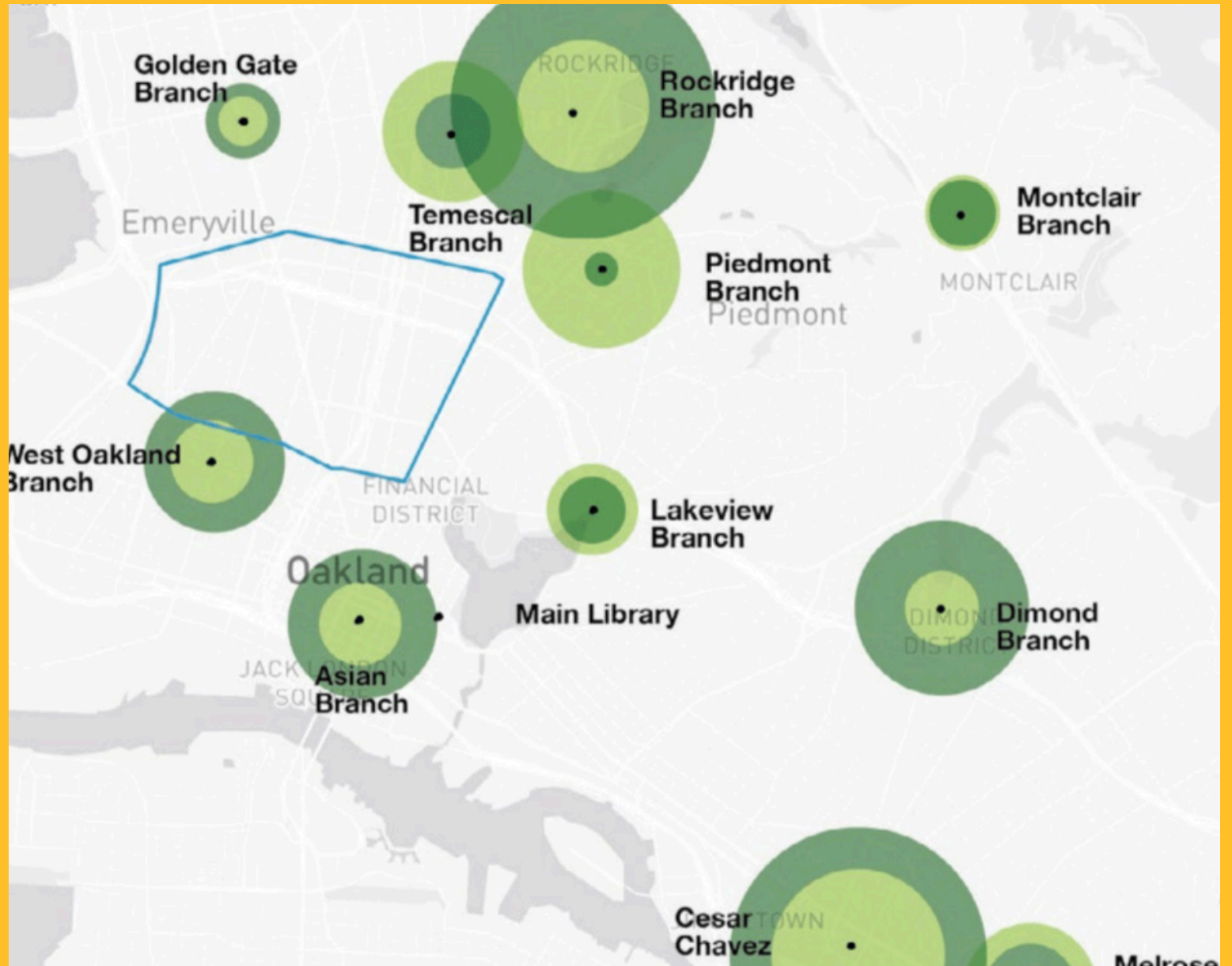


Medellín Photo and Plan

CASE STUDY: Employment rates in Medellín rose by nearly 7 per cent between the years 2002 and 2017. Within the same period, communities with Library Parks experienced a 17 percent higher employment growth rate than those without.

OPL 2023 SUMMER PROGRAMS

In general, small branch libraries are punching above their weight - offering a significant number of programs despite size - making the recommended size for Hoover an open question.



OPL 2023 Summer Programming Map

LIBRARIES

A selection of library designs from across the world wide.

AHMED BABA INSTITUTE



WARAK KAYU



ESWATINI - ROUND LIVING



BIBLIOTECA PUBLICO PILOTO



BIBLIOTECA MUNICIPAL



REEMDOOGA - MUSIC GARDEN



ANANDALOY THERAPY



BEBETECAS



HYUNDAI CARD COOKING



BRING BACK OUR LIBRARY!

LIBRARIES

“ [Libraries] are the window to the world” - Mayor Ridwan Kami of Bandung, Indonesia

BAREFOOT LIBRARY



TAMAN BIMA



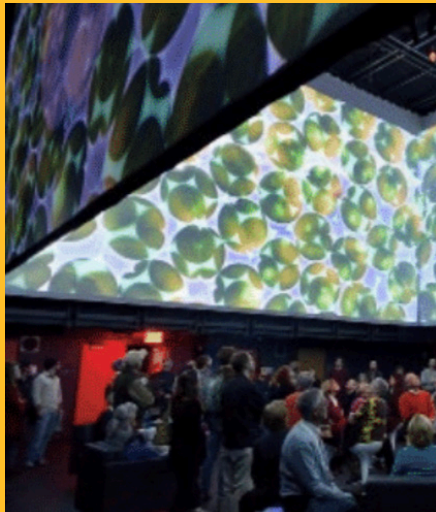
COMIC BOOK FESTIVAL



HILL ROAD LIBRARY



THE CUBE



CAREER FAIR



HAMILTON GRANGE LIBRARY TEEN



STONY ISLAND ARTS BANK



PLEASANT HILL QUILTING



BRING BACK OUR LIBRARY!

SURVEY RESULTS

From June to August 2023, 561 surveys were completed.

561 Survey Participants

as of August 29, 2023

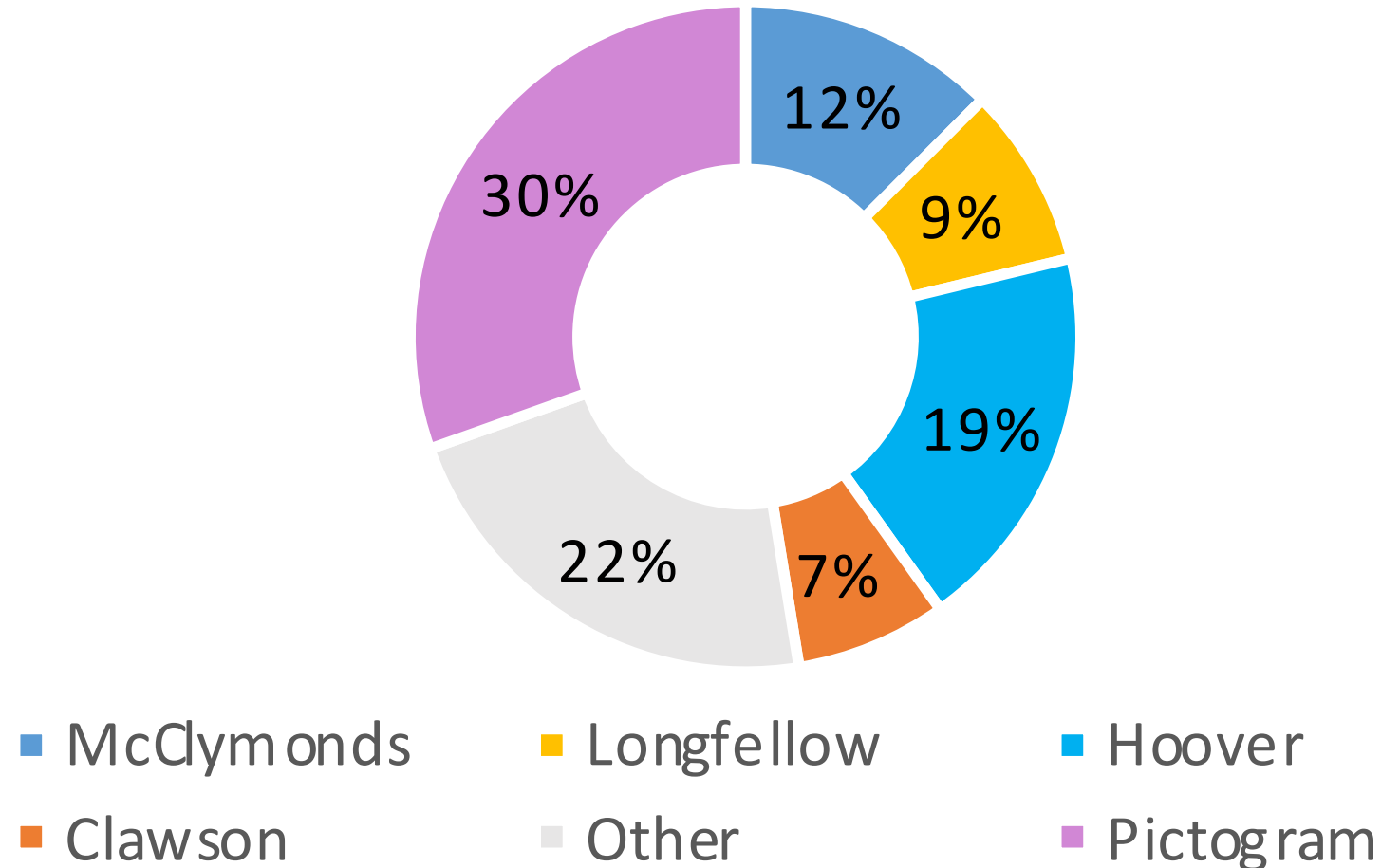


Image: Combined Survey Responses
BRING BACK OUR LIBRARY!

SURVEY RESULTS

From June to August 2023, 561 surveys were completed, and respondents indicated their preferred location for the future library.



Mapped Community Survey Votes

NEXT STEPS

Existing Facilities Analysis

**Stay up to date by
subscribing to our
newsletter at:**

[https://www.oaklandca.gov/
topics/hover-branch-library](https://www.oaklandca.gov/topics/hover-branch-library)

Follow us on IG at:
[@fohdpl](https://www.instagram.com/fohdpl)