

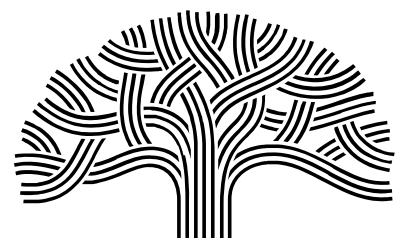
General Plan Update (GPU) Phase 2 Overview

**Presentation to the Library
Commission**

February 25, 2025

Planning and Building Department

Joanna Winter, Ruslan Filipau



**CITY OF
OAKLAND**



Agenda

- General Plan Update (GPU) Background
- GPU Phase 2 Components
- Discussion
- Next Steps

General Plan Background

City of Oakland Team

- **Joanna Winter**, Planner IV, Phase 2 Project Manager
- Laura Kaminski, Strategic Planning Manager
- Tarisha Bal, Deputy City Attorney
- Lakshmi Rajagopalan and Michelle Matranga, Co-Leads, Land Use and Transportation Element (LUTE)
- Ruslan Filipau, Lead, Noise Element
- Daniel Findley, Lead, Infrastructure & and Capital Facilities (ICF) Element
- Khalilha Haynes, Lead, Open Space, Conservation, and Recreation (OSCAR) Element
- Timothy Green, General Plan Advisory Committee Coordinator
- Bebe LeGardeur, Elements Support
- Mariah Padilla, Elements Support
- Aaron Lehmer, Technical Communications Specialist

What is a General Plan?



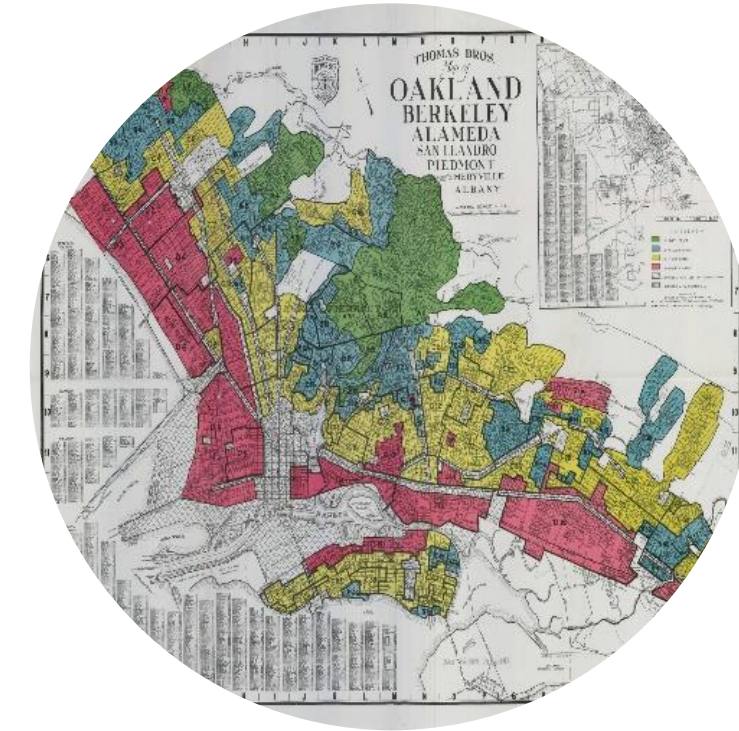
"Constitution" for development and conservation

Establishes citywide vision
and supporting goals,
policies, and
implementation measures



Identifies past challenges & accomplishments

Provides consistent
direction for future
development



Opportunity to Reduce Racial Inequities & Do Inclusive Engagement

Engage our community in
the planning and decision-
making process

How does the General Plan Affect Oakland?



Enhance parks and recreational spaces



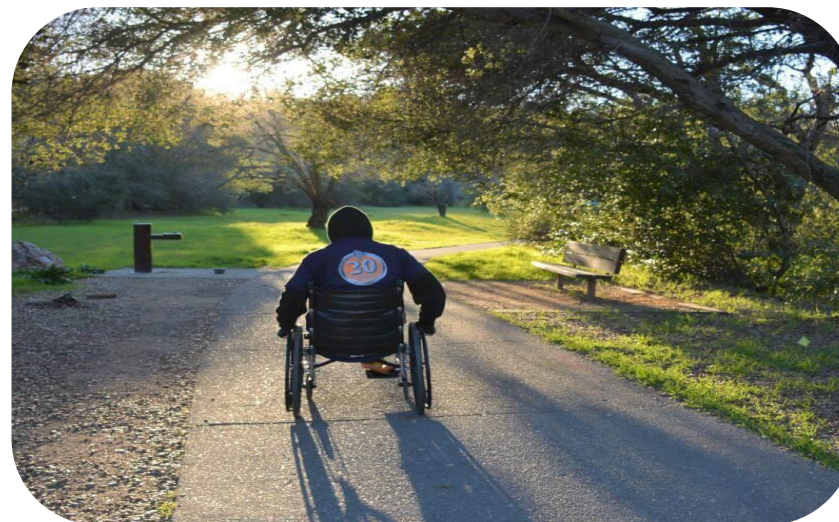
Improve access to jobs and career opportunities



Create more livable neighborhoods



Nurture cultural and natural resources



Improve how people get around



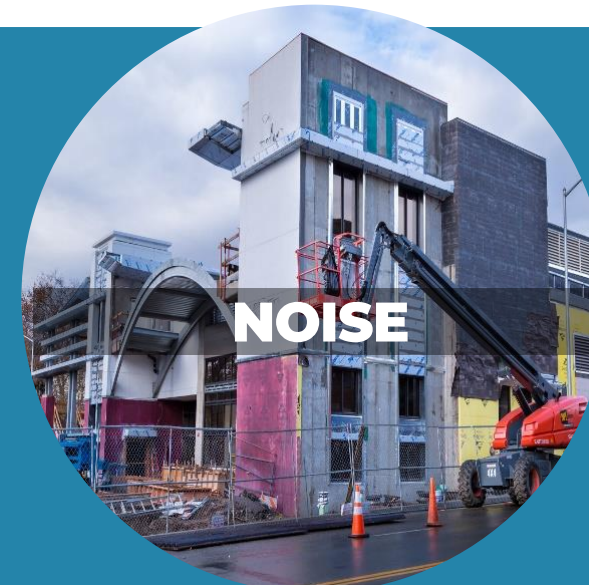
Improve city infrastructure

Phased Update

PHASE 1:
2020-2023



PHASE 2:
2023-2026



Overview of Phase 1 Elements



Housing

- Addresses Oaklander's **housing needs, at all income levels** (2023-2031)
- **Protect** Tenants
- **Preserve** Existing Affordable Housing
- **Produce** Affordable Housing



Safety

- Address **natural and human-caused hazards** (wildfire, earthquake, climate change, flooding, evacuation, hazardous materials)
- Improve **resilience to climate change** impacts

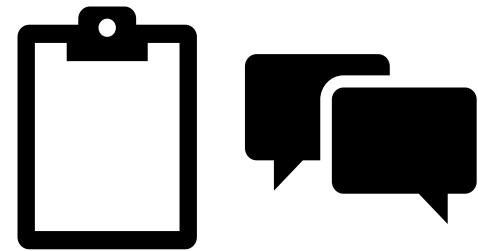


Environmental Justice

- Address needs of **most impacted and vulnerable communities**
- Address air quality and pollution; safe and sanitary housing; healthy food access; physical activity; investment prioritization; civic engagement

Phase 2 Timeline

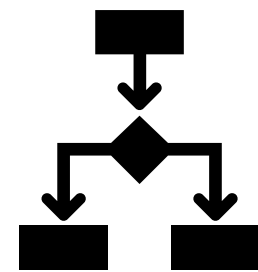
FALL 2024



Initial Engagement

Build on Phase 1 input and get thoughts on Phase 2 issues and strategies

WINTER 2024 –
SPRING 2025



Develop Alternatives

Evaluate different options, concepts, and tradeoffs to achieving community goals

SPRING 2025 –
SUMMMER 2025



Preferred Alternative

Combine preferred alternatives concepts into the Preferred Plan

FALL 2025 –
FALL 2026



Element Development

Using community input, develop elements for public review

WINTER 2026



Hearings and Adoption

Elements go to decisionmakers for consideration

**Community engagement opportunities and feedback loops (where the City shares how input has been incorporated) to occur at all steps*

Community Engagement



Image: Deeply rooted youth fellows and Unity council members at the Oakland General Plan table, Source: Karla Guerra



A. "Kamen" Khan, @ak2web3, and Jessica Lee, @jessicazlee, discuss their vision for Oakland's future @oaklandsource.



Focus on Oakland's most impacted residents

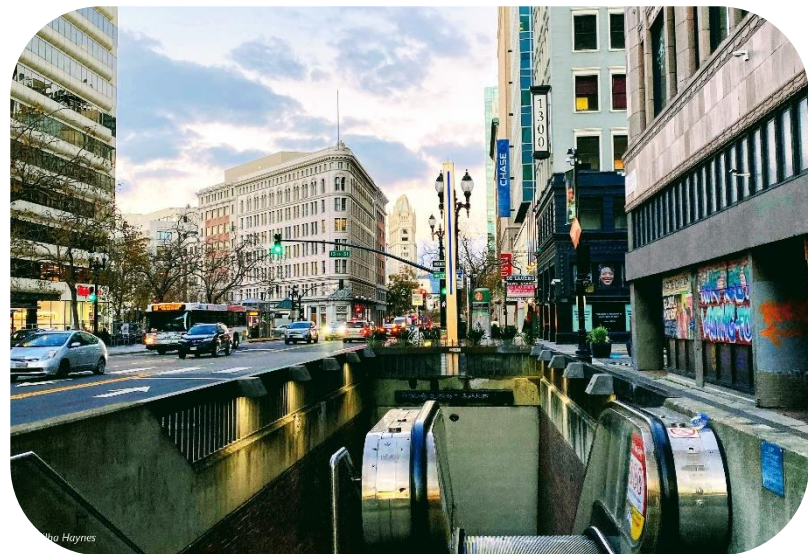
- Working class communities
- Communities of color
- Unhoused
- Formerly incarcerated
- Youth
- Communities experiencing environmental injustices

Community Events:

- Tabling at Existing Community Events
- Neighborhood and Townhall Workshops
- Discussion/Focus Groups
- Decisionmaker Meetings
- Online Engagement

Phase 2 Components

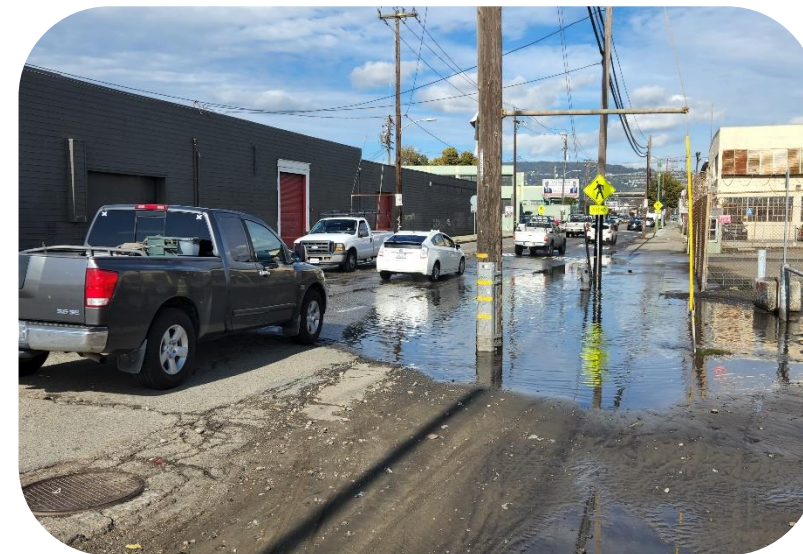
Phase 2 Elements



**Land Use and
Transportation
Element**



**Open Space,
Conservation, and
Recreation (OSCAR)**



**Infrastructure and
Facilities**



Noise

Land Use and Transportation Element (LUTE)

Land Use: How Oakland will grow and change, and what will be preserved and maintained

- Population, housing, and economic development/jobs
- Kinds, locations, and intensities of land uses
- Intentional focus on neighborhood needs and social equity
- Arts, history, and culture

Transportation: How destinations in Oakland and beyond will be linked and connected

- Movement of people and goods
- All types of transportation systems
- Transportation system safety, comfort, convenience, and accessibility
- Reducing greenhouse gases



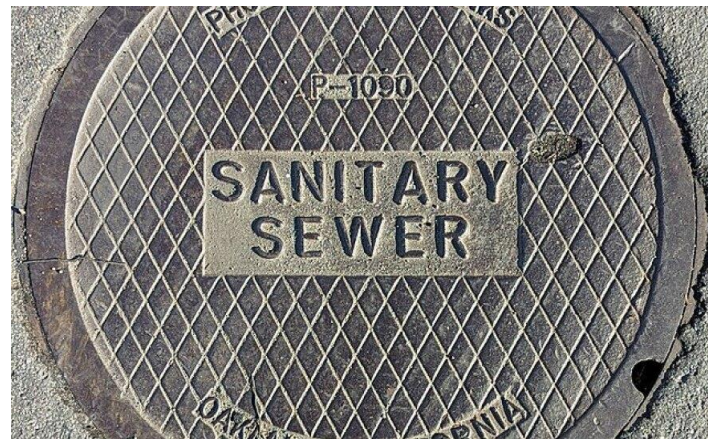
Infrastructure and Public Facilities Element

Infrastructure: Plan for well-maintained, resilient, and high-quality critical systems that serve the city and its people.

- Water + Sewage
- Storm drainage and flood control
- Solid waste & recycling
- Gas and electricity
- Communications (including Internet)
- Roadway improvements

Public Facilities: Support an equitably distributed, and well-maintained network of public facilities that support Oaklanders' health and well-being.

- Libraries
- Educational facilities
- Recreation and community centers
- Fire and police stations
- Other civic buildings



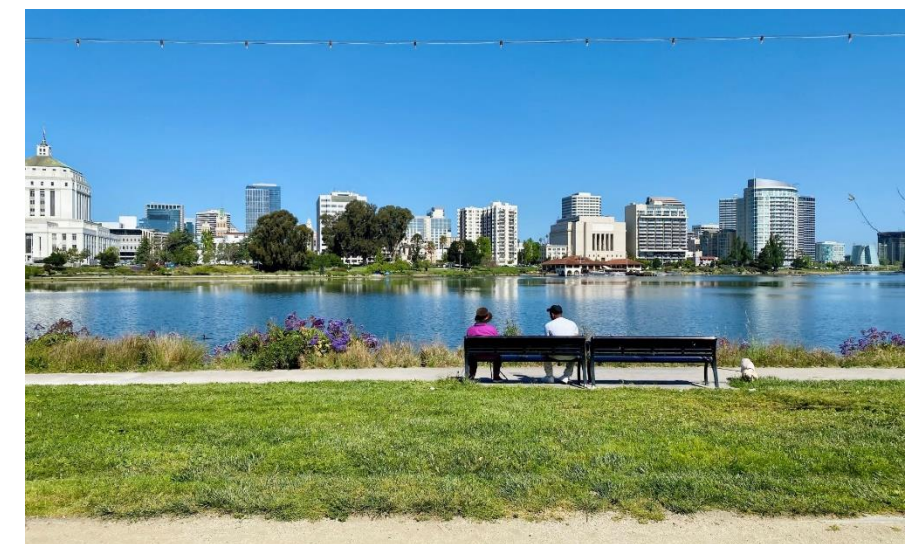
Open Space, Conservation, and Recreation (OSCAR) Element

Open Space and Conservation: Maintain, preserve, & strengthen Oakland's network of open spaces and conserve important natural resources

- Open space network connections and accessibility
- Habitat management

Recreation: Build an equitable, well-maintained, accessible network of parks and recreational facilities that support and reflect Oaklander's needs, identities and cultures

- Types of parks and distribution throughout city
- Parks maintenance, safety, and security
- Parks programming, events, arts & culture



Noise Element

Minimize the adverse effects of noise pollution on public health while promoting a high quality of life for residents

Noise sources include:

- Roadways
- Rail operations
- Industrial facilities
- Airports



Discussion

Discussion Questions

1. What are **key issues** that libraries need addressed?
2. Where in the city do you see **existing and future needs** for libraries?
3. What role can the libraries play in addressing **climate resilience**, e.g., serving as resilience centers?
4. Are there **critical infrastructure** issues facing our library system that the City needs to address?
5. What assistance, if any, does the library need in providing **culturally competent and inclusive public spaces** for Oaklanders?
6. In what ways can libraries role as **neighborhood centers** be strengthened?
7. How should improvements be **prioritized and funded**?

Next Steps

- Visit the website and sign up for the mailing list:
oaklandca.gov/gpu
- Stay tuned for other community events and opportunities to engage

