



LEARN ABOUT



Oakland Public Library's

# NATIVE SEEDS



Discover why native plants matter and how you can grow them



Created By: Tahlia Borowsky, Kayla Borowsky, & Jasmine Márquez-Ixcoy  
For Our Senior Capstone Project 2026

TAG US @OAKLIBRARY OR USE #WEGARDENOPL

Check out OPL's Seed Lending & Gardening page to find more books, other resources, seed library locations, & upcoming events!



[OAKLANDLIBRARY.ORG/SEED](https://oaklandlibrary.org/seed)



# What Native Plants Are Included in Our Wildflower Mixes?

## COASTAL CALIFORNIA POLLINATOR CONSERVATION MIX

- White Yarrow
- Mountain Garland Clarkia
- California Poppy
- Gumplant
- Common Sunflower
- Baby Blue Eyes
- California Phacelia
- Tansy Phacelia
- Red Fescue
- Purple Needlegrass
- Vinegar Weed



## COAST OF CALIFORNIA WILDFLOWER MIX

- Coastal California Poppy
- Blue-Eyed Grass
- Tidy Tips
- Goldfields
- Baby-Blue-Eyes
- Purple Chinese Houses
- Punchbowl Godetia
- Dwarf Plantain
- Globe Gilia
- Miniature and Sky Lupines

# Why Are Invasive Plants Harmful?

**Invasive plants** are plants that are not native and harmful to an ecosystem, which often spread quickly.



- Invasive plants outcompete native plants for essential resources, making it difficult for native species to survive in their own environment.
- Invasive plants disrupt wildlife because many animals rely on native plants for food and shelter.
- Invasive plants reduce biodiversity by taking over local plant communities, which can lead to fewer plant species in an area.
- Invasive plants can be difficult to control once they spread, quickly creating large patches that are hard to remove once they grow.



# Why Are Native Plants Important?

## **BIODIVERSITY SUPPORT:**

Native plants provide stable habitats for many species of wildlife, offering essential shelter and food.

## **ECOSYSTEM STABILITY:**

Native plants are well adapted to local conditions, making them more resistant to pests and diseases.

## **SUSTAINABILITY:**

Native plants naturally thrive in their own habitat, reducing the need for chemical fertilizers and pesticides to grow successfully.

## **WATER CONSERVATION & SOIL HEALTH:**

Native plants have deep root systems that help conserve water, enhance soil health, and protect against erosion.



# Why Are Pollinators Important?



- Pollinators help plants reproduce by moving pollen between flowers.
- Pollinators allow plants to produce seeds, fruits, and new plants.
- Pollinators support about one-third of the food humans eat (many fruits, vegetables, and nuts).
- Pollinators maintain healthy ecosystems by helping plants grow in forests, grasslands, and gardens.
- Pollinators provide food and habitat for many animals that depend on plants.
- Pollinators increase biodiversity and genetic diversity in plant populations.



## White Yarrow (*Achillea millefolium*)

Hardy native perennial with white flower clusters and fern-like leaves that attract pollinators.

**FUN FACT:** Named after the Greek hero Achilles, who legend says used yarrow to treat soldiers' wounds.



**Sun Exposure:** Full to partial sun

**Water Needs:** Low water

**Mature Size:** Up to 24 in. tall

**Bloom Time:** Late spring to summer



## Mountain Garland Clarkia (*Clarkia unguiculata*)

Native annual with ruffled, orchid-like blooms in pink, purple, white, or red that support native pollinators.

**FUN FACT:** Attracts Clark's sphinx moth, which lays its eggs on Clarkia species.



**Sun Exposure:** Full sun to partial shade

**Water Needs:** Low to moderate water

**Mature Size:** 2-4 ft. tall

**Bloom Time:** Late spring to summer



## Miniature Lupines (*Lupinus bicolor*) Sky Lupines (*Lupinus annuus*)



Small annual native wildflowers with blue and white pea-like flowers and palm-shaped leaves that support pollinators.

**Sun Exposure:** Full sun

**Water Needs:** Low water

**Mature Size:** 16-24 in. tall

**Bloom Time:** Early to late spring

**FUN FACT:** Petal spots change from white to magenta when nectar runs out, signaling pollinators to visit other flowers.



## Common Sunflower (*Helianthus annuus*)



Tall annual with large golden flower heads that provide seeds for wildlife.

**FUN FACT:** Sunflowers were cultivated by Indigenous peoples of the Americas for food and ceremonial uses.

**Sun Exposure:** Full sun

**Water Needs:** Low to moderate water

**Mature Size:** 3-10 ft. tall

**Bloom Time:** Summer to fall



## Purple Chinese Houses (*Collinsia heterophylla*)



Native annual with stacked purple and white flowers resembling tiny pagodas.

**FUN FACT:** Popular in woodland gardens for its unique layered blooms.

**Sun Exposure:** Full sun to partial shade

**Water Needs:** Low water

**Mature Size:** 1-2 ft. tall

**Bloom Time:** Spring



## Baby Blue Eyes (*Nemophila menziesii*)



Low-growing annual with soft blue and white flowers that attract bees and butterflies.

**FUN FACT:** The name comes from the Greek word *nemos*, meaning woodland or glade.

**Sun Exposure:** Full sun to partial shade

**Water Needs:** Low water

**Mature Size:** 4-12 in. tall

**Bloom Time:** Late winter to spring



## Punchbowl Godetia (*Clarkia bottae*)



Showy native annual with pink to lavender cup-shaped flowers.

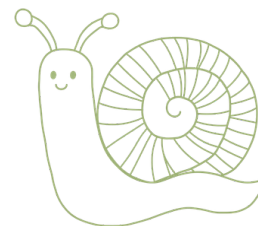
**FUN FACT:** Often referred to as “Farewell-to-Spring” flowers, as they tend to bloom late in the season

**Sun Exposure:** Full sun to partial shade

**Water Needs:** Low water

**Mature Size:** Up to 3ft. tall

**Bloom Time:** Late Spring to early summer



## Dwarf Plantain (*Plantago erecta*)



Small annual herb with narrow, grass-like basal leaves and tiny white flowers on slender spikes.

**FUN FACT:** Critical larval food plant for the threatened Bay Checkerspot Butterfly and endangered Quino Checkerspot.

**Sun Exposure:** Full sun to partial shade

**Water Needs:** Low water

**Mature Size:** 2-10 in. tall

**Bloom Time:** Spring



## California Poppy (*Eschscholzia californica*)



Bright orange native annual with cup-shaped flowers and finely divided green leaves.

**FUN FACT:** Flowers open in full sunlight and close at night or on cloudy days.



**Sun Exposure:** Full sun

**Water Needs:** Low water

**Mature Size:** 6-24 in. tall

**Bloom Time:** Spring to fall



## Globe Gilia (*Gilia capitata*)



Annual wildflower with blue to violet spherical flower clusters that attract many pollinators.

**FUN FACT:** One flower head can contain 50-100 tiny flowers packed into a single globe.

**Sun Exposure:** Full sun to partial shade

**Water Needs:** Low water

**Mature Size:** Up to 2 ft. tall

**Bloom Time:** Late spring to mid-summer



## Gumplant (*Grindelia hirsutula*)



Native perennial with bright yellow daisy-like flowers and sticky buds.

**FUN FACT:** Named in honor of botanist David Hieronymus Grindel.

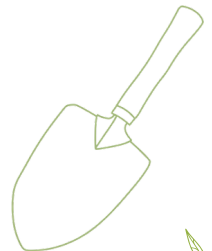


**Sun Exposure:** Full sun

**Water Needs:** Low water

**Mature Size:** 1-3 ft. tall

**Bloom Time:** Spring to fall



## Tidy Tips (*Layia platyglossa*)

Cheerful annual with bright yellow petals tipped in white.

**FUN FACT:** Thrives in poor soils and blooms heavily in spring wildflower displays.



**Sun Exposure:** Full sun  
**Water Needs:** Low water  
**Mature Size:** 6-24 in. tall  
**Bloom Time:** Spring

## California Phacelia (*Phacelia californica*)



Native perennial with lavender to purple flowers that curl outward as they bloom.

**FUN FACT:** Supports many native bees and butterflies, including rare species in coastal California.

**Sun Exposure:** Full sun to partial shade

**Water Needs:** Low water

**Mature Size:** 1-3 ft. tall

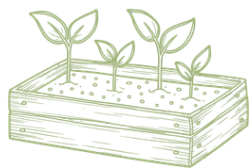
**Bloom Time:** Spring to early summer



## Goldfields (*Lasthenia*)

Low-growing annual with small and bright yellow daisy-like flowers.

**FUN FACT:** Named after Lasthenia of Mantinea, a Greek philosopher who disguised herself as a man to study at Plato's Academy.



**Sun Exposure:** Full sun  
**Water Needs:** Low water  
**Mature Size:** 4-6 in. tall  
**Bloom Time:** Late winter to spring

## Tansy Phacelia (*Phacelia tanacetifolia*)

Fast-growing annual with lavender, fern-like flower clusters highly attractive to bees.

**FUN FACT:** Widely used as a cover crop in agriculture to improve soil health.

**Sun Exposure:** Full sun

**Water Needs:** Low water

**Mature Size:** 1-3 ft. tall

**Bloom Time:** Spring to early summer







## Red Fescue (*Festuca rubra*)

Perennial grass and bristle-like, bright green, or "V"-shaped leaves

**FUN FACT:** Often used in native lawn alternatives and coastal restoration projects.



**Sun Exposure:** Full sun to partial shade  
**Water Needs:** Low to moderate water  
**Mature Size:** 1-3 ft. tall  
**Bloom Time:** Spring to early summer



## Vinegar Weed (*Trichostema lanceolatum*)

Aromatic annual with bright purple flowers that attract native bees.

**FUN FACT:** Leaves have a strong scent that resembles vinegar when crushed.




**Sun Exposure:** Full sun  
**Water Needs:** Low water  
**Mature Size:** 1-3 ft. tall  
**Bloom Time:** Summer to fall



## Purple Needlegrass (*Nassella pulchra*)

California's state grass with graceful purple-tinged seed heads.

**FUN FACT:** Deep roots help it survive drought and stabilize soil.



**Sun Exposure:** Full sun  
**Water Needs:** Very low water  
**Mature Size:** 2-3 ft. tall  
**Bloom Time:** Spring to early summer



## Blue-Eyed Grass (*Sisyrinchium bellum*)

Iris relative with grass-like leaves and small blue-purple flowers with yellow centers.

**FUN FACT:** Despite its name, it is not a true grass but part of the iris family.



**Sun Exposure:** Full sun to partial shade  
**Water Needs:** Low water  
**Mature Size:** 6-18 in. tall  
**Bloom Time:** Late winter through spring

